



Land Information Ontario

Warehouse Data Class Description
Report:

Common Tables

Format:
Standard NRVIS Interchange Format (SNIF)

Issued: January 22, 2007

Table of Contents

<i>Table of Contents</i>	2
<i>Introduction</i>	3
<i>Related Documents</i>	5
<i>Data Class Overview</i>	6
<i>File List</i>	7
<i>Product Data Model</i>	8
<i>Data Class Table Descriptions</i>	9
<i>Appendix</i>	24

Introduction

Disclaimer

This technical documentation has been prepared by the Ministry of Natural Resources (the “Ministry”), representing Her Majesty the Queen in right of Ontario. No warranties or representations, express or implied, statutory or otherwise shall apply or are being made by the Ministry with respect to the documentation, its accuracy or its completeness.

In no event will the Ministry be liable or responsible for any lost profits, loss of revenue or earnings, claims by third parties or for any economic, indirect, special, incidental, consequential or exemplary damage resulting from any errors, inaccuracies or omissions in this documentation; and in no event will the Ministry’s liability for any such errors, inaccuracies or omissions on any particular claim, proceeding or action, exceed the actual consideration paid by the claimant involved to the Ministry for the materials to which this instructional documentation relates. Save and except for the liability expressly provided for above, the Ministry shall have no obligation, duty or liability whatsoever in contract, tort or otherwise, including any liability or negligence. The limitations, exclusions and disclaimers expressed above shall apply irrespective of the nature of any cause of action, demand or action, including but not limited to breach of contract, negligence, strict liability, tort or any other legal theory, and shall survive any fundamental breach or breaches.

Additional Information

For more information about this document, please contact Land Information Ontario at (705) 755-1878 or info-access@webmail.mnr.gov.on.ca.

Published January 2007
© 2007 Queen's Printer for Ontario

Using this Report

This report describes the contents and structure of the common tables for data class packages in the format (SNIF) in which data classes are extracted from and published to the Ontario Land Information Warehouse. The common tables are those which exist for all data classes in the warehouse. The purpose of this report is to assist data users in understanding the common tables data received in the SNIF package, as well as to assist data publishers creating common tables for a SNIF package.

For a general overview of the SNIF package, refer to the document entitled [What is SNIF?](#) The document entitled *Land Information Ontario Detailed SNIF Subscription Specifications* provides a detailed examination of the SNIF.

This report is meant to be used in conjunction with the *Warehouse Data Class Description Report* for a specific data class. These two reports together fully describe the complete contents of a SNIF package.

Data Class Overview

The Data Class Overview section provides an overall description of the data class, including version. The abstract class refers to the spatial characteristics to which this class conforms.

File List

The File List section lists the mandatory and optional common tables that could be contained within a SNIF package. Tables that are listed as optional may not necessarily be included in a SNIF package.

Product Data Model

The common tables are depicted in diagram form, showing the relationships between the tables and the geographic unit table. Every warehouse data class has a geographic unit table.

Data Class Table Descriptions

This section of the report describes each common table in detail. A description of the table is included, along with column names, descriptions, types, and sizes. Columns which are considered mandatory are noted.

Valid values are listed for any columns which have a predefined list of possible values. If there are more than six possible values, the first six are shown in the report with the column description. The complete list is shown in the report appendix.

Appendix

The report appendix includes full listings of permissible values for columns with more than six possible values. Also included is a description of date fields that are included in every table.

Related Documents

[What is SNIF?](#)

[Ministry of Natural Resources Policy for Management of Classified Data in Ontario
Land Information Warehouse](#)

[Land Information Ontario Detailed SNIF Subscription Specifications](#)

[Land Information Ontario Detail SNIF Publication Specifications](#)

Data Class Overview

Data Class: Geog Unit Class System Class
Short Name: GEOGUNIT
Version: 3

System class object

Abstract Class: NONSPATIAL

An object that is business related, has no spatial characteristics by itself but may have a relationship to a spatial object.

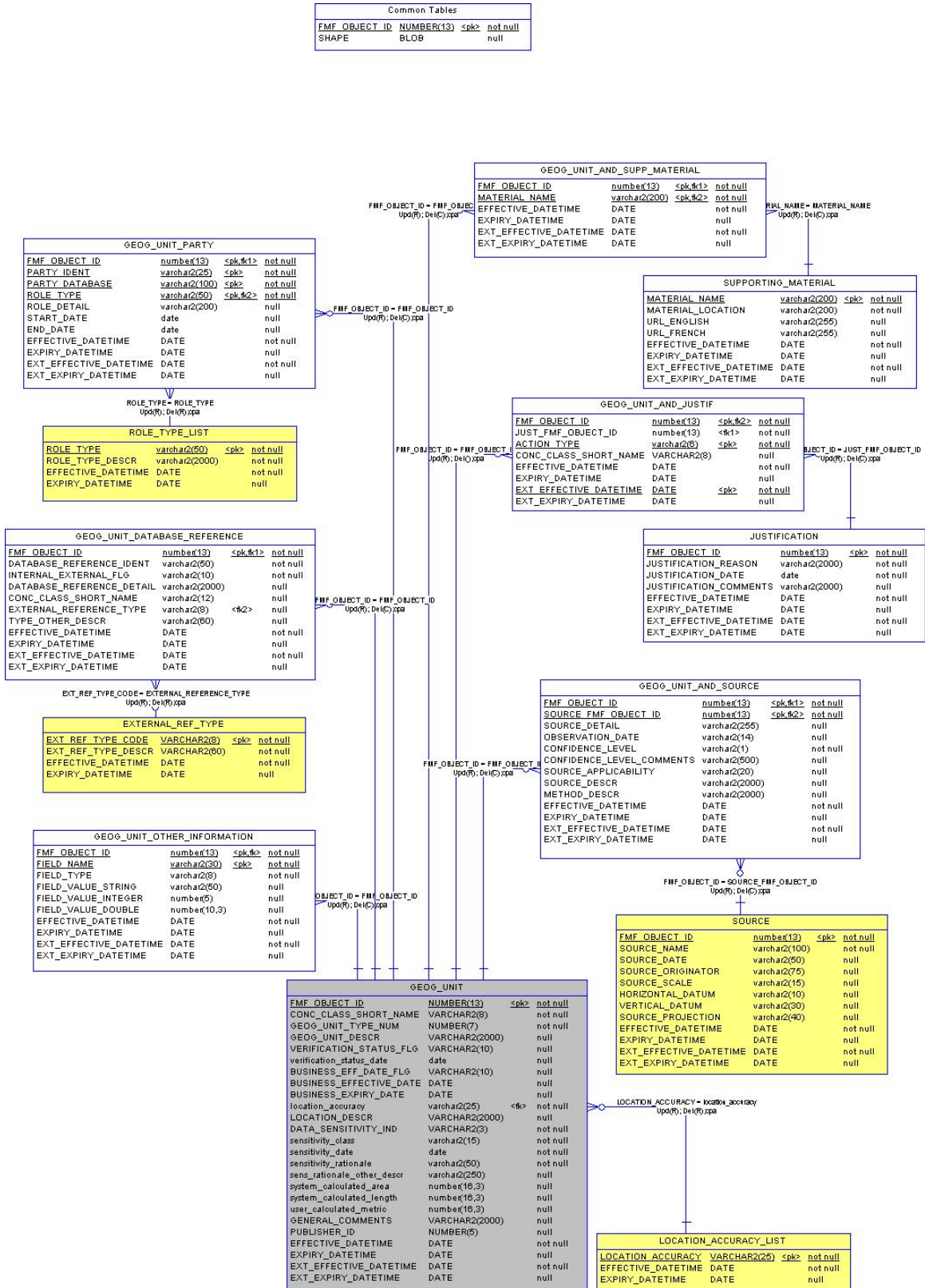
File List

The following list specifies the table files, along with their folder locations and type (mandatory, optional, or lookup), that are included in a SNIF package for this data class, as extracted from the Ontario Land Information Warehouse.

For data publishers, the table files that are not identified as mandatory may be included if the appropriate data is available. Likewise, additional common tables (as described in the *Warehouse Data Class Description Report for Common Tables*) are also identified as optional and may be included if the appropriate data is available. Table files identified as lookup tables provide descriptive values for codes within other tables. These tables do not need to be supplied by data publishers.

Folder and File Name	Mandatory Indicator
common\EXTERNAL_REF_TYPE.tbl	(lookup)
common\GEOG_UNIT.tbl	No
common\GEOG_UNIT_AND_JUSTIF.tbl	No
common\GEOG_UNIT_AND_SOURCE.tbl	Yes
common\GEOG_UNIT_AND_SUPP_MATERIAL.tbl	No
common\GEOG_UNIT_DATABASE_REFERENCE.tbl	No
common\GEOG_UNIT_OTHER_INFORMATION.tbl	No
common\GEOG_UNIT_PARTY.tbl	No
common\JUSTIFICATION.tbl	No
common\LOCATION_ACCURACY_LIST.tbl	(lookup)
common\ROLE_TYPE_LIST.tbl	(lookup)
common\SOURCE.tbl	(lookup)
common\SUPPORTING_MATERIAL.tbl	No

Product Data Model



Data Class Table Descriptions

Table EXTERNAL_REF_TYPE				
Desc: List of valid EXTERNAL_REFERENCE_TYPE codes.				
ID	Column Name	Type	Mandatory	Short Name
1	EXT_REF_TYPE_CODE	VARCHAR2(8)	Yes	
	The type of external reference that the identifier pertains to e.g. LUP, LIS, Other			
2	EXT_REF_TYPE_DESCR	VARCHAR2(60)	Yes	
	Description of the type of external reference			

Table GEOG_UNIT				
Desc: A bounded geographic area of a specified type. A thing of interest to the Ministry that has spatial characteristics (i.e. location represented by a point, line or polygon) and requires supporting evidence (GEOG_UNIT_AND_SOURCE) and justification (GEOG_UNIT_AND_JUSTIFICATION) for its creation and major changes.				
ID	Column Name	Type	Mandatory	Short Name
1	FMF_OBJECT_ID System-generated object identifier, unique at the application level.	NUMBER(13,0)	Yes	OBJECT_ID
2	CONC_CLASS_SHORT_NAME System-generated column denoting the concrete class which this record is part of.	VARCHAR2(8)	Yes	CONC_CLASS
3	GEOG_UNIT_TYPE_NUM Identifier of the Geographic Unit Type.	NUMBER(7,0)	Yes	GUT_NUMBER
4	GEOG_UNIT_DESCR Detailed description of the Geographic Unit.	VARCHAR2(2000)	No	GUNT_DES
5	VERIFICATION_STATUS_FLG An indication as to whether a qualified employee has verified the existence of the geographic unit. Valid Values: Verified,Unverified	VARCHAR2(10)	No	VERISTT_FL
6	VERIFICATION_STATUS_DATE Date that the geographic unit was verified/validated.	DATE	No	VERISTT_DT
7	BUSINESS_EFF_DATE_FLG Indication of whether the business effective date is an actual or estimated value. Valid Values: Actual, Estimated	VARCHAR2(10)	No	BUSEFFDTFL
8	BUSINESS_EFFECTIVE_DATE Date that the record becomes effective in relation to the business i.e. the date MNR became aware of its existence.	DATE	No	BUS_EFF_DT
9	BUSINESS_EXPIRY_DATE A date indicating when the record was determined to be invalid.	DATE	No	BUS_EXP_DT

Table GEOG_UNIT (continued)

Desc: A bounded geographic area of a specified type. A thing of interest to the Ministry that has spatial characteristics (i.e. location represented by a point, line or polygon) and requires supporting evidence (GEOG_UNIT_AND_SOURCE) and justification (GEOG_UNIT_AND_JUSTIFICATION) for its creation and major changes.

ID	Column Name	Type	Mandatory	Short Name
10	LOCATION_ACCURACY	VARCHAR2(25)	Yes	ACCURACY

The degree of conformity or closeness of a measurement within the database to its true value in the world.

Valid Values:

AC Accurate (to 10m)	(expired)
AP Approximate (to 500m)	(expired)
GE General (to 10,000m)	(expired)
MO Moderate (to 1000m)	(expired)
RE Reliable (to 100m)	(expired)
VG Vague (to 100,000m)	(expired)

See table LOCATION_ACCURACY_LIST in Appendix for complete list.

11	LOCATION_DESCR	VARCHAR2(2000)	No	LOC_DES
----	----------------	----------------	----	---------

Description of the area or directions on how to get to the site.

13	SENSITIVITY_CLASS	VARCHAR2(15)	Yes	SENS_CLASS
----	-------------------	--------------	-----	------------

The ranking of the sensitivity of the information embodied in the feature. Often wide-spread knowledge of the location of some rare aspect of our natural heritage will endanger it. On the other hand, this knowledge by some parties is also extremely important for its protection.

High - information that is extremely sensitive and intended for use by named individuals only. Refers to information that could have negative impacts on human life or health if released. Currently no data classes meet this

Medium - information that is sensitive and intended for use only by specified groups of employees and approved agents of the Crown. For OLIW/NRVIS refers to information where the entire data type has been flagged as sensitive (i.e. Stick Nests for Vulnerable Threatened and Endangered (VTE) species)

Low - information generally available to employees and approved agents of the Crown. Refers to sensitive features within a data type not normally sensitive (i.e. specific instances of Pileated Woodpecker)

Non-Sensitive - data and information that does not fall into any of the three sensitivity levels. If disclosed will not result in any injury to individuals, government or private sector institutions (i.e. base data)

Valid Values: High,Medium,Low,Non-Sensitive

Table GEOG_UNIT (continued)				
ID	Column Name	Type	Mandatory	Short Name
	Desc: A bounded geographic area of a specified type. A thing of interest to the Ministry that has spatial characteristics (i.e. location represented by a point, line or polygon) and requires supporting evidence (GEOG_UNIT_AND_SOURCE) and justification (GEOG_UNIT_AND_JUSTIFICATION) for its creation and major changes.			
14	SENSITIVITY_DATE	DATE	Yes	SENS_DATE
	The date that the sensitivity classification was established.			
15	SENSITIVITY_RATIONALE	VARCHAR2(50)	Yes	SENS_RAT
	The primary reason for the information sensitivity classification. Examples: "VTE Species", "Data provider agreement", "No Restriction Needed" (for Not Sensitive data), "Protect feature type", "Protect single feature", "Legislative or legal reqt", "Other". Valid Values: VTE Species, Data Provider Agreement, No Restriction Needed ,Protect Feature type, Protect Single Feature, Legislative or Legal Req, Other			
16	SENS_RATIONALE_OTHER_DESCR	VARCHAR2(250)	No	SENS_DESCR
	Description of the reason(s) for the information classification when "Other" is selected as the rationale.			
17	SYSTEM_CALCULATED_AREA	NUMBER(16,3)	No	SYS_AREA
	The area of a polygon measured in square metres by the system.			
18	SYSTEM_CALCULATED_LENGTH	NUMBER(16,3)	No	SYS_LENGTH
	The perimeter of a polygon or length of a line measured in metres.			
19	USER_CALCULATED_METRIC	NUMBER(16,3)	No	USER_CALC
	The length, perimeter or area of an object in metres or square metres as measured or provided by the user.			
20	GENERAL_COMMENTS	VARCHAR2(2000)	No	GNL_CMT
	General comments.			

Table GEOG_UNIT_AND_JUSTIF				
Desc: Intersection table between Geographic Unit and Justification.				
ID	Column Name	Type	Mandatory	Short Name
1	FMF_OBJECT_ID Foreign key to GEOG_UNIT.	NUMBER(13,0)	Yes	OBJECT_ID
2	JUST_FMF_OBJECT_ID Foreign key to JUSTIFICATION.	NUMBER(13,0)	Yes	JUSTIF_ID
3	ACTION_TYPE Type of transaction performed on an object's tabular data. Valid Values: Create,Modify,Delete,Import	VARCHAR2(6)	Yes	ACT_TYPE
4	CONC_CLASS_SHORT_NAME	VARCHAR2(8)	No	CONC_CLASS

Table GEOG_UNIT_AND_SOURCE				
Desc: Intersection table between Geog Unit and Source.				
ID	Column Name	Type	Mandatory	Short Name
1	FMF_OBJECT_ID Foreign key to GEOG_UNIT.	NUMBER(13,0)	Yes	OBJECT_ID
2	SOURCE_FMF_OBJECT_ID Foreign key to SOURCE. Valid Values: 210300001 Field Survey\Site Visit 210300002 Aerial Survey 210300003 MNR Based Observation 210300019 Digital File 210300034 Unknown Imagery 210300035 Local Knowledge	NUMBER(13,0)	Yes	SOURCE_ID
See table SOURCE in Appendix for complete list.				
3	SOURCE_DETAIL What part of the source pertains to the feature. Examples: Summary data from a data base, pages in a book or atlas, figure number and page from a publication, a section of a map, record in a database.	VARCHAR2(255)	No	DETAIL
4	OBSERVATION_DATE The year, year/month, year/month/day or year/month/day/hour/minute/second that the species was most recently observed in the geographic unit.	VARCHAR2(14)	No	OBS_DATE
5	CONFIDENCE_LEVEL The level of confidence in the person/techniques/methods used in collecting the observation data. Possible confidence levels include H (high), M (medium), or L (low). Valid Values: H,M,L,^	VARCHAR2(1)	Yes	CONF_LEVEL
6	CONFIDENCE_LEVEL_COMMENTS Comments related to the confidence level.	VARCHAR2(500)	No	CONF_COMM
7	SOURCE_APPLICABILITY How the source contributes to the feature's definition. Valid Values: Spatial,Tabular,Spatial/Tabular	VARCHAR2(20)	No	APPLICABIL
8	SOURCE_DESCR Text providing details about the source.	VARCHAR2(2000)	No	DESCR
9	METHOD_DESCR The type of method, tools, and techniques used in observing/collecting/recording the Geographic Unit Source. It may also include a URL where users could get further information on the method used.	VARCHAR2(2000)	No	METHOD

Table GEOG_UNIT_AND_SUPP_MATERIAL

Desc: Intersection table between Geographic Unit and Supporting Material.

ID	Column Name	Type	Mandatory	Short Name
1	FMF_OBJECT_ID System generated identifier, unique at the application level.	NUMBER(13,0)	Yes	OBJECT_ID
2	MATERIAL_NAME A name or brief description of the material.	VARCHAR2(200)	Yes	NAME

Table GEOG_UNIT_DATABASE_REFERENCE

Desc: A link to an external database or an internal object in the same database.

ID	Column Name	Type	Mandatory	Short Name
1	FMF_OBJECT_ID System generated identifier, unique at the application level.	NUMBER(13,0)	Yes	OBJECT_ID
2	DATABASE_REFERENCE_IDENT Identifier of a reference that is linked e.g. Land Use Permit Number, LIS Number, the FMF Object ID of a Concrete Class.	VARCHAR2(50)	Yes	IDENT
3	INTERNAL_EXTERNAL_FLG A flag indicating if the database being referenced is internal (NRVIS/LIO) or external. Valid Values: Internal,External	VARCHAR2(10)	Yes	INT_EXT
4	DATABASE_REFERENCE_DETAIL Details on the rationale, use, dependency, or comments on the database reference. If a dependence on other data class geometry exists, this can be identified in this field.	VARCHAR2(2000)	No	DETAIL
5	CONC_CLASS_SHORT_NAME Static short name that will be used by for the concrete class.	VARCHAR2(12)	No	CONC_CLASS
6	EXTERNAL_REFERENCE_TYPE The type of external database that the identifier pertains to e.g. LUPS, LIS, etc. Valid Values: ALPS Aggregate Licence Permit Database AMIS Abandoned Mines Database LIS Land Index System LUP Land Use Permit OTHER Other External Reference PER Permit	VARCHAR2(8)	No	EXT_TYPE

See table **EXTERNAL_REF_TYPE** in Appendix for complete list.

7	TYPE_OTHER_DESCR A full description of the type when set to "other".	VARCHAR2(60)	No	OTH_DESCR
---	---	--------------	----	-----------

Table GEOG_UNIT_OTHER_INFORMATION

Desc: This table allows the NRVIS/LIO users to enter local-needs type of information, currently not captured in the NRVIS or LIO database. The table content will be analysed periodically to determine if the field(s) should be incorporated into the regular data class structure.

ID	Column Name	Type	Mandatory	Short Name
1	FMF_OBJECT_ID System generated identifier, unique at the application level.	NUMBER(13,0)	Yes	OBJECT_ID
2	FIELD_NAME The attribute name for the information.	VARCHAR2(30)	Yes	FIELD_NAME
3	FIELD_TYPE The type of field. Valid Values: String,Integer,Double	VARCHAR2(8)	Yes	FIELD_TYPE
4	FIELD_VALUE_STRING A field used to store character strings.	VARCHAR2(50)	No	VALUE_S
5	FIELD_VALUE_INTEGER A field used to store integer values (small numbers).	NUMBER(5,0)	No	VALUE_I
6	FIELD_VALUE_DOUBLE A field used to store decimal data with up to two decimals.	NUMBER(10,3)	No	VALUE_D

Table GEOG_UNIT_PARTY				
Desc: An association between a Party and a Role to signify that this Party plays this specific role.				
ID	Column Name	Type	Mandatory	Short Name
1	FMF_OBJECT_ID System generated identifier, unique at the application level.	NUMBER(13,0)	Yes	OBJECT_ID
2	PARTY_IDENT An identifier for a party (group or individual). It should reference an identifier in an external database which would contain further information. The identifier should not contain personal information (i.e. Social Insurance Number, Outdoors Card Number, phone number, name etc.).	VARCHAR2(25)	Yes	PARTY_ID
3	PARTY_DATABASE The database that contains the party information.	VARCHAR2(100)	Yes	PARTY_DB
4	ROLE_TYPE The role that an organization or an individual plays. Valid Values: Custodian This role type indicates that the related Party (Individual or Group) is responsible for the care of the related Geographic Unit. Employee This role type indicates that the related "from" Party (an Individual) is employed by the related "to" Party (a Group). Issuer This role type indicates that the related Party (Individual or Group) is one that has issued the related Authority (license, permit, etc.). Lease Holder This role type indicates that the related Party (Individual or Group) has occupancy rights to the related Geographic Unit for the period and according to the terms of a lease agreement. Manager This role type indicates that the related "from" Party (Individual or Group) manages or directs the activities of the related "to" Party (the "to" Party reports to or is accountable to the "from" Party); or manages the operation of the related Geographic Unit (e.g., a Tourism Establishment). Verifier N/A	VARCHAR2(50)	Yes	ROLE_TYPE
See table ROLE_TYPE_LIST in Appendix for complete list.				
5	ROLE_DETAIL Additional details about the role.	VARCHAR2(200)	No	DETAIL
6	START_DATE The date when a Party starts to play a Role.	DATE	No	START_DATE
7	END_DATE The date when a Party ceases to play a Role.	DATE	No	END_DATE

Table JUSTIFICATION				
Desc: The justification for the addition of or changes to an object.				
ID	Column Name	Type	Mandatory	Short Name
1	FMF_OBJECT_ID System generated identifier, unique at the application level.	NUMBER(13,0)	Yes	OBJECT_ID
2	JUSTIFICATION_REASON Reason for justification of the existence of a GEOGRAPHIC UNIT.	VARCHAR2(2000)	Yes	REASON
3	JUSTIFICATION_DATE Date that the GEOGRAPHIC UNIT was justified.	DATE	Yes	JUST_DATE
4	JUSTIFICATION_COMMENTS Comments relating to justification.	VARCHAR2(2000)	No	COMMENTS

Table LOCATION_ACCURACY_LIST				
Desc: List of valid LOCATION_ACCURACYs.				
ID	Column Name	Type	Mandatory	Short Name
1	LOCATION_ACCURACY	VARCHAR2(25)	Yes	ACCURACY
The accuracy of the location of the feature at an OBM scale. The degree of conformity or closeness of a measurement to the true value.				

Table ROLE_TYPE_LIST				
Desc: List of valid party role types.				
ID	Column Name	Type	Mandatory	Short Name
1	ROLE_TYPE The role that an organization or an individual plays.	VARCHAR2(50)	Yes	ROLE_TYPE
2	ROLE_TYPE_DESCR Description of Role Type.	VARCHAR2(2000)	Yes	DESCR

Table SOURCE				
Desc: A description of the source information that is the basis for creating or changing information about a geographic unit. It may be an observation, possibly resulting from a field survey or an adhoc report or a reference to a published or unpublished document. A source may have one Source Method.				
ID	Column Name	Type	Mandatory	Short Name
1	FMF_OBJECT_ID System generated identifier, unique at the application level.	NUMBER(13,0)	Yes	OBJECT_ID
2	SOURCE_NAME The name of the source.	VARCHAR2(100)	Yes	NAME
3	SOURCE_DATE The date of the source.	VARCHAR2(50)	No	SRC_DATE
4	SOURCE_ORIGINATOR The originator or author of the source. Includes the author(s) of a book; the originator(s) of a survey, etc. Examples : Smith, J. Smith, J. and Jones, K. Smith, J., Jones, K. and White, T. Anon. (where no author identified) OMNR (where authorship is corporate)	VARCHAR2(75)	No	ORIGINATOR
5	SOURCE_SCALE The scale of the vector base or aerial photography, the cell resolution of a grid, or the pixel resolution of an image used to record the location of the feature. Examples: For a vector source or aerial photography: 1:10,000 1:20,000 1:250,000. For a grid or imagery source: 1 km, 10 m, 15 seconds.	VARCHAR2(15)	No	SCALE
6	HORIZONTAL_DATUM Identifies the reference system used for defining the coordinates of points. There are three common horizontal datum systems used in Ontario: NAD83, NAD27, NAD27 with 1974 adjustment. The datum models the shape of the earth. Valid Values: NAD27,NAD83,NAD27adj74	VARCHAR2(10)	No	H_DATUM
7	VERTICAL_DATUM The zero surface to which elevations or heights are referred is called a vertical datum. Traditionally, surveyors and mapmakers have tried to simplify the task by using the average (or mean) sea level as the definition of zero elevation, because the sea surface is available worldwide. MSL is a close approximation to another surface, defined by gravity, called the geoid, which is the true zero surface for measuring elevations. Example: WGS-84 EGM96 Geoid.	VARCHAR2(30)	No	V_DATUM
8	SOURCE_PROJECTION The name of a systematic representation of all or part of the surface of the Earth on a plane or developable surface.	VARCHAR2(40)	No	PROJECTION

Table SUPPORTING_MATERIAL				
Desc: Material (document/file/picture) that provides more information on a spatial object.				
ID	Column Name	Type	Mandatory	Short Name
1	MATERIAL_NAME A name or brief description of the material.	VARCHAR2(200)	Yes	NAME
2	MATERIAL_LOCATION The location where the supporting material is stored. This may be a physical location or a link to a storage location.	VARCHAR2(200)	Yes	LOCATION
3	URL_ENGLISH The address of a computer or a document in English on the Internet that consists of a communications protocol followed by a colon and two slashes (as http://), the identifier of a computer (as www.m-w.com) and usually a path through a directory to a file -- called also universal resource locator.	VARCHAR2(255)	No	URL_ENG
4	URL_FRENCH The address of a computer or a document in French on the Internet that consists of a communications protocol followed by a colon and two slashes (as http://), the identifier of a computer (as www.m-w.com) and usually a path through a directory to a file -- called also universal resource locator.	VARCHAR2(255)	No	URL_FR

Appendix

Lookup Tables

These tables are lookup tables containing codes and associated descriptive values.

Lookup Table Name: LOCATION_ACCURACY_LIST

LOCATION_ACCURACY	EXPIRY_DATETIME	EFFECTIVE_DATETIME
AC Accurate (to 10m)	2006/01/18	1996/09/13
AP Approximate (to 500m)	2006/01/18	1996/09/13
GE General (to 10,000m)	2006/01/18	1996/09/13
MO Moderate (to 1000m)	2006/01/18	1996/09/13
RE Reliable (to 100m)	2006/01/18	1996/09/13
VA Very Accurate (to 2m)	2006/01/18	1996/09/13
VG Vague (to 100,000m)	2006/01/18	1996/09/13
^ Data Load	2006/01/18	1996/09/13
Not Applicable		2006/11/13
Over 10,000 metres		2001/12/18
Within 1 metre		2001/12/18
Within 10 metres		2001/12/18
Within 10,000 metres		2001/12/18
Within 100 metres		2001/12/18
Within 1000 metres		2001/12/18
Within 2 metres		2001/12/18
Within 20 metres		2001/12/18
Within 200 metres		2001/12/18
Within 2000 metres		2001/12/18
Within 5 metres		2001/12/18
Within 50 metres		2001/12/18
Within 500 metres		2001/12/18
Within 5000 metres		2001/12/18

Lookup Table Name: EXTERNAL_REF_TYPE

EXT_REF_TYPE_CODE	EXT_REF_TYPE_DESCR	EXPIRY_DATETIME
ALPS	Aggregate Licence Permit Database	
AMIS	Abandoned Mines Database	
ARFIS	Algonquin Region Forest Database	
BCD	Biological and Conservation Database	
DTDB	Digital Topographic Database	
FISHARC	Fisheries Data Archive	
FISHLIB	Fisheries Information Library	
FRI	Forest Resources Inventory Database	
IF	Internal Filing	
LIS	Land Index System	
LUP	Land Use Permit	
NADB	Natural Areas Database	
NTDB	National Topographic Database	
NWEIMS	Wetland Evaluation Information Management Database (North)	
OBM	Ontario Base Map Database	
OFIS	Ontario Fisheries Information Database	
OLI	Ontario Land Inventory	
OPDS	Ontario Petroleum Database	
OTHER	Other External Reference	
PER	Permit	
SFMM	Sustainable Forest Management Model	
WEIMS	Wetland Evaluation Information Management Database (South)	
^	NRVIS 2.0 Data Conversion	1999/11/05

Lookup Table Name: ROLE_TYPE_LIST

ROLE_TYPE	ROLE_TYPE_DESCR	EXPIRY_DATETIME
Affiliated With	This role type indicates that the related "from" Party (Individual or Group) has a relationship with the related "to" Party that is not more explicitly covered by another role type.	
Approver	This role type indicates that the related Party (Individual or Group) is one that has approved action associated with the related item. For example, if the related item is an Authority (License, permit, etc.) this would indicate the Party that approved the issuance of the Authority; if the related item is a Recommended Action this would indicate the Party that approved the initiation of the action; etc.	
Authority Holder	This role type indicates that the related Party (Individual or Group) is the one to which the Ministry has issued the related Authority (license, permit, etc.).	
Claim Holder	This role type indicates that the related Party (Individual or Group) is the one that is the registered owner of the related Mining Claim (area).	
Contact	This role type indicates that the related "from" Party (Individual or Group) is the designated point of contact for communication with the related "to" Party.	
Contractor	N/A	
Custodian	This role type indicates that the related Party (Individual or Group) is responsible for the care of the related Geographic Unit.	
Data Provider	This role type indicates that the related Party (Individual or Group) is the provider of a data source about the related Geographic Unit.	
Employee	This role type indicates that the related "from" Party (an Individual) is employed by the related "to" Party (a Group).	
Evaluator	This role type indicates that the related Party (Individual or Group) is the one who has evaluated the related Geographic Unit.	
Group Member	This role type indicates that the related "from" Party (Individual or Group) is a member of the	

ROLE_TYPE	ROLE_TYPE_DESCR	EXPIRY_DATETIME
	related "to" Party (a Group). This could include membership in a Local Citizens Committee or a designated interest group.	
Information Holding Custodian	This role type indicates that the related Party (Individual or Group) is responsible for the storage and protection of the related Information Holding.	
Interested Party	This role type indicates that the related Party (Individual or Group) has a stated interest in a related Issue; or has a stated interest in plans and activities involving the related Geographic Unit.	
Issuer	This role type indicates that the related Party (Individual or Group) is one that has issued the related Authority (license, permit, etc.).	
Lease Holder	This role type indicates that the related Party (Individual or Group) has occupancy rights to the related Geographic Unit for the period and according to the terms of a lease agreement.	
Manager	This role type indicates that the related "from" Party (Individual or Group) manages or directs the activities of the related "to" Party (the "to" Party reports to or is accountable to the "from" Party); or manages the operation of the related Geographic Unit (e.g., a Tourism Establishment).	
Metadata Custodian	This role type indicates that the related Party (Individual or Group) is responsible for the storage and protection of the information ABOUT the related Information Holding. Note: There is a separate role type for the custodian of the information holding itself.	
Observer	This role type indicates that the related Party (Individual or Group) is the one who made the observations in the related Information Source.	
Operator	This role type indicates that the related Party (Individual or Group) operates the related Geographic Unit facility (e.g., Tourism Establishment, Mill).	
Owner	This role type indicates that the related Party (Individual or Group) owns the related Geographic Unit (e.g., Tourism Establishment).	
Partner	This role type indicates that the related "from"	

ROLE_TYPE	ROLE_TYPE_DESCR	EXPIRY_DATETIME
	Party (Individual or Group) has a partnership arrangement with the related "to" Party.	
Steward	This role type indicates that the related "from" Party (Individual or Group) is responsible for assisting the Ministry with respect to the management of resources within the related Geographic Unit.	
Supervisor	This role type indicates that the related "from" Party (Individual or Group) supervises the activities of the related "to" Party.	
Verifier	N/A	

Lookup Table Name: SOURCE

FMF_OBJECT_ID	SOURCE_NAME	SOURCE_DATE	SOURCE_ORIGINATOR	SOURCE_SCALE	VERTICAL_DATUM	HORIZONTAL_DATUM	SOURCE_PROJECTION	EXPIRY_DATE
210300001	Field Survey\Site Visit							
210300002	Aerial Survey							
210300003	MNR Based Observation							
210300004	Public Observation							
210300005	GPS Data Collection							
210300006	File System/Filing Cabinet Information							
210300007	Digital Map							
210300008	Hard Copy/Paper Map							
210300009	Book/Publication							
210300010	Ontario Base Map	1978 to 1995	Ministry of Natural Resources			NAD27	UTM	
210300011	Ontario Base Map 1:10000	1978 to 1995	Ministry of Natural Resources	10000		NAD27	UTM	
210300012	Ontario Base Map 1:20000	1978 to 1995	Ministry of Natural Resources	20000		NAD27	UTM	
210300013	NTS Map 1:50000	1970 to 2003	Department of Natural Resources	50000		NAD27		
210300014	NTS Map 1:250000	1970 to 2003	Department of Natural Resources	250000		NAD27		
210300015	AFFM Provincial		Ministry of Natural	600000				

FMF_OBJECT_ID	SOURCE_NAME	SOURCE_DATE	SOURCE_ORIGINATOR	SOURCE_SCALE	VERTICAL_DATUM	HORIZONTAL_DATUM	SOURCE_PROJECTION	EXPIRY_DATE
	Administrative Maps		Resources					
210300016	Forest Resources Inventory		Ministry of Natural Resources			NAD27	UTM	
210300017	OrthoImagery		Ministry of Natural Resources					
210300018	Aerial Photography		Ministry of Natural Resources	15840				
210300019	Digital File							
210300020	IKONOS Multispectral		Ministry of Natural Resources					
210300021	IKONOS Panchromatic		Ministry of Natural Resources					
210300022	IRS Multispectral		Ministry of Natural Resources					
210300023	IRS Panchromatic		Ministry of Natural Resources					
210300024	IRS Pansharpened		Ministry of Natural Resources					
210300025	Landsat-7 ETM		Ministry of Natural Resources					
210300026	Landsat-4,5 MSS		Ministry of Natural Resources					
210300027	Landsat-4,5 MSS		Ministry of Natural Resources					
210300028	Landsat-1,2,3 MSS		Ministry of Natural Resources					

FMF_OBJECT_ID	SOURCE_NAME	SOURCE_DATE	SOURCE_ORIGINATOR	SOURCE_SCALE	VERTICAL_DATUM	HORIZONTAL_DATUM	SOURCE_PROJECTION	EXPIRY_DATE
210300029	CIR Photography		Ministry of Natural Resources					
210300030	External Source from NRVIS 2							
210300031	Internal Source from NRVIS 2							
210300032	Material Source from NRVIS 2							
210300033	Source Observation from NRVIS 2							
210300034	Unknown Imagery							
210300035	Local Knowledge							

Appendix (continued)

Date Information

Note that the format for date attribute columns is yyyy-mm-dd-hh:mm:ss. An example is 1998-02-16-00:00:00.

Standard date columns are shown on the data model diagram, but to save space are not repeated for each of the detailed table descriptions. The descriptions below apply to all of them.

Column Name	Type	Man	Short Name
EFFECTIVE_DATETIME	DATE	Yes	EFF_DATE
For subscription: Date/time that the record was created in the LIO database. For publication: Date/time that the record was created in the source database.			
EXPIRY_DATETIME	DATE	No	EXP_DATE
For subscription: Date/time the record is no longer valid in the LIO database. For publication: Date/time the record is no longer valid in the source database.			
EXT_EFFECTIVE_DATETIME	DATE	Yes	EXT_EFF_DT
For subscription: Date/time that the record was created in the source database. For publication: not applicable.			
EXT_EXPIRY_DATETIME	DATE	No	EXT_EXP_DT
For subscription: Date/time the record is no longer valid in the source database. For publication: not applicable.			

All tables contain EFFECTIVE_DATETIME and EXPIRY_DATETIME.
All tables except lookup tables also contain EXT_EFFECTIVE_DATETIME and EXT_EXPIRY_DATETIME.